



Australian Government
Department of Immigration
and Border Protection



Australian
BORDER FORCE

Immigration Detention and Community Statistics Summary

30 June 2017

Table of Contents

Immigration Detention and Community Statistics Summary.....	1
About this report.....	3
Enquiries	3
Acronyms	3
Immigration Detention And Community Statistics Summary	4
In Community under Residence Determination Population By State/Territory.....	5
Immigration Detention Population	6
From 1990 to 30 June 2017	6
People In Immigration Detention Facilities.....	7
Arrival Type.....	7
People In Immigration Detention.....	8
Nationality	8
Children In Immigration Detention.....	9
Time In Immigration Detention Facilities	11
Time In Community Under Residence Determination.....	12

About this report

This report provides an overview of the number of people in immigration detention and Regional Processing Centres as at midnight on the date of the report. The report is produced on a monthly basis.

Data is sourced from several departmental processing and recording systems. Data relating to the immigration detention population is dynamic and there can be delays in transmission of information from the department's immigration detention network operations. Variations in figures between this report and previous issues can occur. Due to these issues, data from the current financial year should always be considered provisional.

Further information about immigration detention is available at:

<http://www.border.gov.au/about/immigration-detention-in-australia>

Enquiries

Comments or enquiries concerning this report should be sent using the department's client service feedback form quoting the name and date of the report.

See: <http://www.border.gov.au/about/contact/make-enquiry/enquiries-and-feedback>

Acronyms

Table 1 – Acronyms used in this document

Acronym	Description
APOD	Alternative Place of Detention
IMA	Illegal Maritime Arrival
IDC/F	Immigration Detention Centre/Facility
IRH	Immigration Residential Housing
ITA	Immigration Transit Accommodation
RPC	Regional Processing Centre
S501	Section 501 of the Migration ACT
S501 Visa Cancellation	Visa cancellations based on character or related grounds

Immigration Detention And Community Statistics Summary

At 30 June 2017, there were 1262 people in immigration detention facilities, including 981 in immigration detention on the mainland and 281 in immigration detention on Christmas Island.

A further 553 people were living in the community after being approved for a residence determination and 22,143 were living in the community after grant of a Bridging Visa E.

The table below reflects figures based on records in Department of Immigration and Border Protection systems.

Table 2 – People in Immigration Detention Facilities (IDFs), Alternative Places of Detention (APODs), Regional Processing Centres (RPCs) and the Community at 30 June 2017

Place of immigration detention	Men	Women	Children	Total	Change from Previous Summary 31/05/17
Christmas Island IDC	281	0	0	281	- 6
Maribyrnong IDC	81	5	0	86	- 21
Perth IDC	12	6	0	18	- 7
Villawood IDC	397	55	0	452	- 35
Yongah Hill IDC	250	0	0	250	- 23
Mainland APODs	<5	<5	5	8	- 12
Total IDCs/APODs	1,023	67	5	1,095	- 104
Adelaide ITA	16	<5	0	17	+ 3
Brisbane ITA	51	7	0	58	- 10
Melbourne ITA	82	10	0	92	- 27
Total in IRH and ITA	149	18	0	167	- 34
Total in IDC/F	1,172	85	5	1,262	- 138

Total in Community under Residence Determination	200	150	203	553	+ 11
---	------------	------------	------------	------------	-------------

Total IMA in Community on Bridging Visa E (Including people in a re-grant process)	15,580	2,923	3,640	22,143	- 558
---	---------------	--------------	--------------	---------------	--------------

Republic of Nauru (RPC)	281	48	42	371	+ 1
Manus Province, Papua New Guinea (RPC)	803	0	0	803	- 13
Total IMA in RPCs	1,084	48	42	1,174	- 12

Detention Group	Men	Women	Children	Total	Change from Previous Summary 31/05/17
S501 Visa Cancellation	434	16	0	450	- 6
Illegal Maritime Arrival	334	8	0	342	-26
Other	404	61	5	470	- 106
Total	1,172	85	5	1,262	- 138

In Community under Residence Determination Population By State/Territory

Of the 553 people approved for a residence determination to live in the community, 34.9 per cent were in Victoria, 27.8 per cent in New South Wales, 23.1 per cent in Queensland, 8 per cent in Western Australia and 6.1 per cent in South Australia.

Table 3 – People in the Community under Residence Determination by State/Territory at 30 June 2017

State/Territory	Adult Male	Adult Female	Child Male (<18 years)	Child Female (<18 years)	Total
Victoria	73	51	39	30	193
New South Wales	50	46	33	25	154
Queensland	39	34	35	20	128
Western Australia	27	9	5	<5	44
South Australia	11	10	<5	9	34
Total	200	150	116	87	553

Immigration Detention Population

From 1990 to 30 June 2017

The number of people in held immigration detention facilities has decreased by 315 to 1262 compared with 1577 at the end of June 2016. This decrease takes into account releases of detainees into the community under residence determination and detainees granted Bridging E visas (BVEs) as well as decreases through return and removal activities.

Figure 1 – Population in Immigration Detention

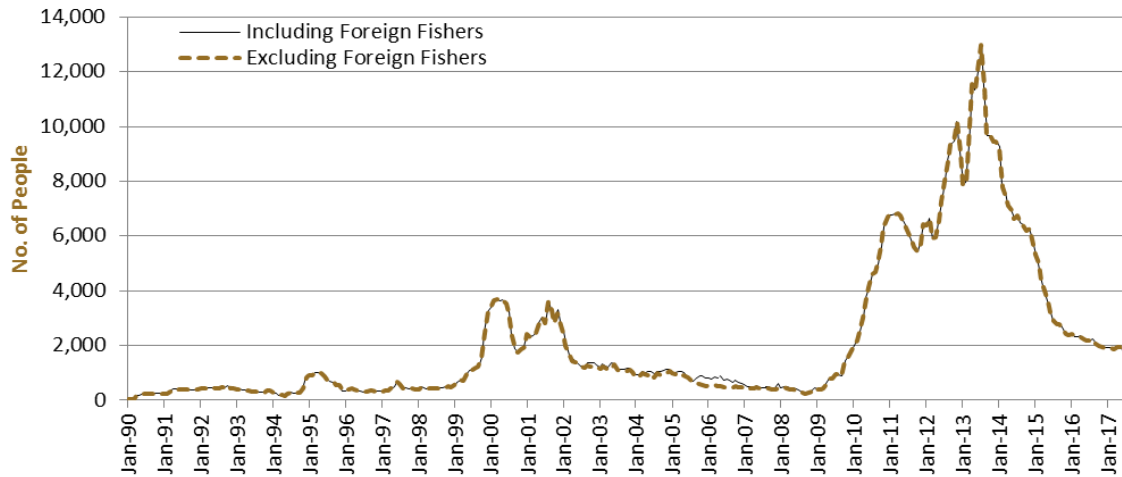


Figure 1 above, shows the number of people in immigration detention from 1990 to the date of this report. The trend had a consistent rise of people in immigration detention from January 2009 to January 2013, but has since had consistent decline.

People In Immigration Detention Facilities

Arrival Type

There were 407 people who arrived unlawfully by air or boat, in held immigration detention facilities at 30 June 2017 representing 32.3 per cent of the total immigration detention population.

There were also 855 people (67.7 per cent of the total immigration population) who arrived in Australia lawfully and were subsequently taken into immigration detention and had visa cancellations for either over staying or breaching their visa conditions.

Figure 2 – People in Held Immigration Detention Facilities by Detention Group

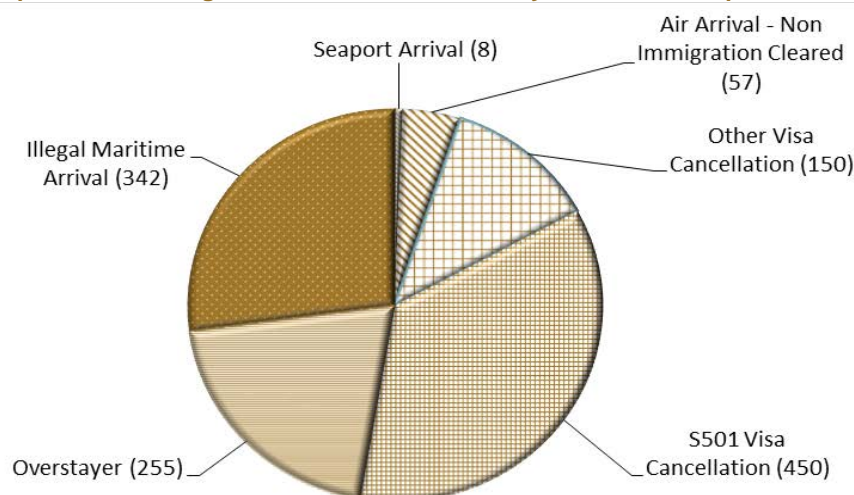


Figure 2 above, shows the number of people in held immigration detention facilities by detention group, including Overstayers, S501 and Other Visa Cancellations, Foreign Fishers, Irregular Maritime Arrivals, Unauthorised Air Arrivals, and if required – Inadequately Documented Crew Members and Others such as stowaways and ship deserters.

Table 4 – People in Held Immigration Detention Facilities by Detention Group at 30 June 2017

Place of immigration detention	S501 Visa Cancellation	IMA	Other Detention Group	Total	Change from Previous Summary 31/05/17
Christmas Island IDC	146	78	57	281	- 6
Maribyrnong IDC	31	12	43	86	- 21
Perth IDC	11	<5	5	18	- 7
Villawood IDC	163	93	196	452	- 35
Yongah Hill IDC	81	95	74	250	- 23
Mainland APODs	0	<5	7	8	- 12
Total IDCs/APODs	432	281	382	1,095	- 104
Adelaide ITA	<5	7	6	17	+ 3
Brisbane ITA	14	18	26	58	- 10
Melbourne ITA	0	36	56	92	- 27
Total in IRH and ITA	18	61	88	167	- 34
Total in IDC/F	450	342	470	1,262	- 138

People In Immigration Detention

Nationality

At 30 June 2017, there were 1262 people in held immigration detention facilities. Of these 1262 people, 13.5 per cent were from New Zealand, 7.8 per cent were from Vietnam, 7.4 per cent were from Iran, 6.9 per cent were from Sri Lanka and 5.2 per cent were from India.

Table 5 – People in Held Immigration Detention Facilities by Nationality at 30 June 2017

Nationalities	Adult Male	Adult Female	Child Male (<18 years)	Child Female (<18 years)	Total
New Zealand	159	11	0	0	170
Vietnam	93	6	0	0	99
Iran	89	5	0	0	94
Sri Lanka	87	0	0	0	87
India	62	<5	0	0	65
Malaysia	43	9	0	0	52
United Kingdom	48	<5	0	0	49
Pakistan	47	0	0	0	47
Iraq	46	0	0	0	46
Other	498	50	<5	<5	553
Total	1,172	85	<5	<5	1,262

At 30 June 2017, 553 were people living in the community after being approved for a residence determination. Of these 553 people, 48.6 per cent were from Iran, 11.4 per cent were from Sri Lanka, 11.2 per cent were Stateless, 5.1 per cent were from Vietnam and 4.9 per cent were from Iraq.

Table 6 – People in the Community under Residence Determination by Nationality at 30 June 2017

Nationalities	Adult Male	Adult Female	Child Male (<18 years)	Child Female (<18 years)	Total
Iran	96	85	49	39	269
Sri Lanka	18	14	21	10	63
Stateless	27	13	11	11	62
Vietnam	10	6	7	5	28
Iraq	10	5	5	7	27
Other	39	27	23	15	104
Total	200	150	116	87	553

Children In Immigration Detention

At 30 June 2017 there were 5 children (aged less than 18 years) in Immigration Residential Housing, Immigration Transit Accommodation and Alternative Places of Detention.

Figure 3 – Children in Immigration Residential Housing, Immigration Transit Accommodation and Alternative Places of Detention

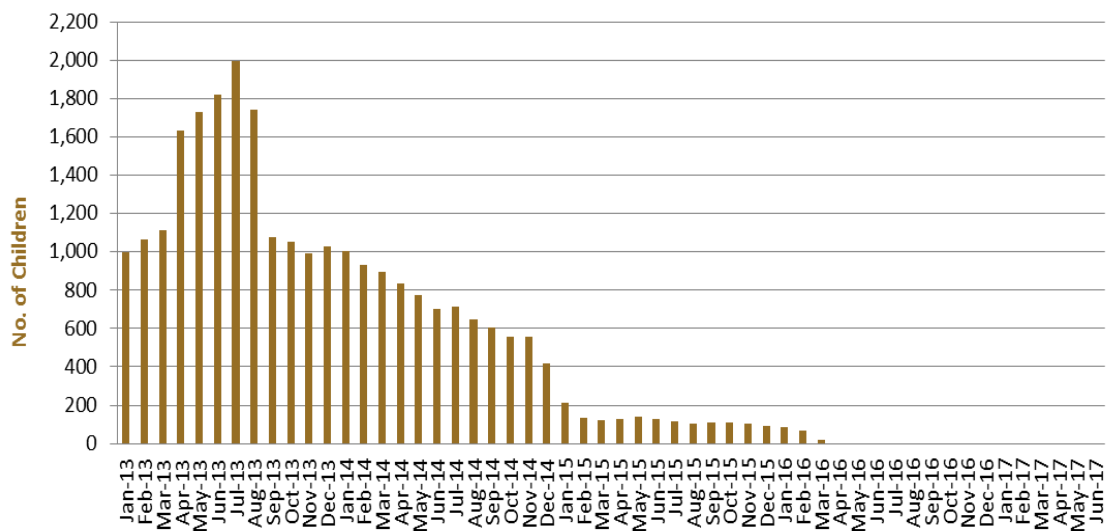


Figure 3 above, shows the number of children in immigration detention facilities and alternative places of detention from January 2013 to the date of this report. The continuous increase in the number of children in detention facilities from April 2013 to August 2013 was due to a rapid increase in irregular maritime arrivals during this period. The number of children in immigration detention facilities reduced in September 2013, as children completed mandatory processing and were transferred into the community. The number of children in detention facilities continued to decline during the late 2013 and 2014, with further reduction in January 2015.

At 30 June 2017, the number of children living in the community after being approved for a residence determination decreased by six to 203 from 209 in the previous report.

Figure 4 – Children in the Community under Residence Determination

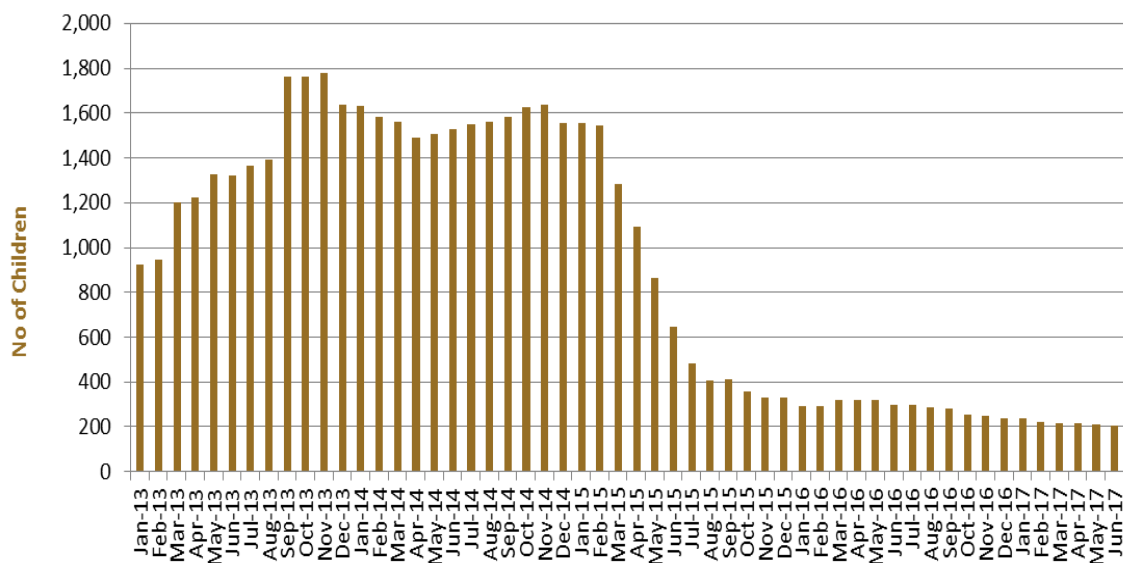


Figure 4 above, shows the number of children in the community under residence determination from January 2012 to the date of this report. The number of children in the community under residence determination, has levelled off at its lowest number since the peak in November 2013, as a result of releases into the community on Bridging E visas.

Table 7 – Children in Immigration Detention and IMA Children in the Community on a Bridging E Visa at 30 June 2017

Placement Type	Children
Immigration Residential Housing	0
Immigration Transit Accommodation	0
Alternative Places of Detention	5
Total Children in Immigration Detention Facilities	5
Total Children in the Community under a Residence Determination	203
Total IMA Children in the Community on a Bridging E visa (including in re-grant process)	3,640

Time In Immigration Detention Facilities

At 30 June 2017, there were 1262 people in immigration detention facilities. Of these 1262 people, 34.4 per cent had been detained for 91 days or less and 60.5 per cent had been detained for 365 days or less.

Table 8 – Length of Time of People in Held Immigration Detention Facilities at 30 June 2017

Period Detained	Total	% of Total
7 days or less	61	4.8%
8 days - 31 days	185	14.7%
32 days - 91 days	188	14.9%
92 days - 182 days	162	12.8%
183 days - 365 days	167	13.2%
366 days - 547 days	109	8.6%
548 days - 730 days	92	7.3%
Greater than 730 days	298	23.6%
Total	1,262	100%

At 30 June 2017, the average period of time for people held in detention facilities was 467 days.

Figure 5 – Average Number of Days of People in Held Immigration Detention Facilities only

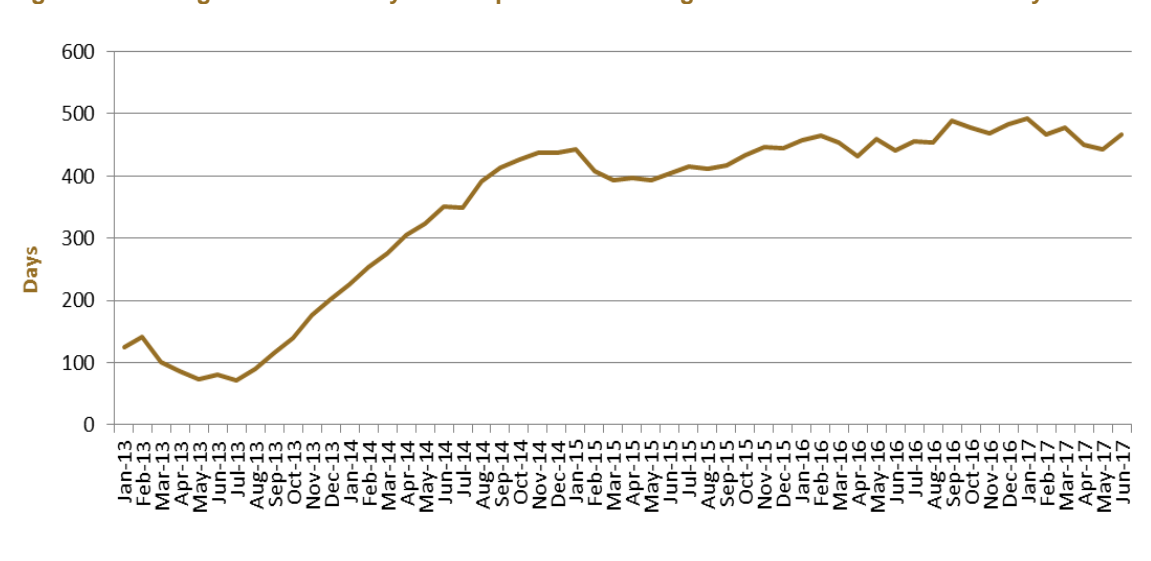


Figure 5 above, shows the average days in held immigration detention only by month from January 2013 to the date of this report. The average period of time for people held in detention facilities steadily increased from July 2013 to January 2015.

Time In Community Under Residence Determination

Of the 553 people in the community under residence determination, as at 30 June 2017, 10.8 per cent had been in the community for 91 days or less and 23.7 per cent had been in the community for 365 days or less.

Table 9 – Length of Time of People in Community under Residence Determination at 30 June 2017

Period Detained	Total	% of Total
7 days or less	5	0.9%
8 days - 31 days	30	5.4%
32 days - 91 days	25	4.5%
92 days - 182 days	34	6.1%
183 days - 365 days	37	6.7%
366 days - 547 days	233	42.1%
548 days - 730 days	46	8.3%
Greater than 730 days	143	25.9%
Total	553	100%